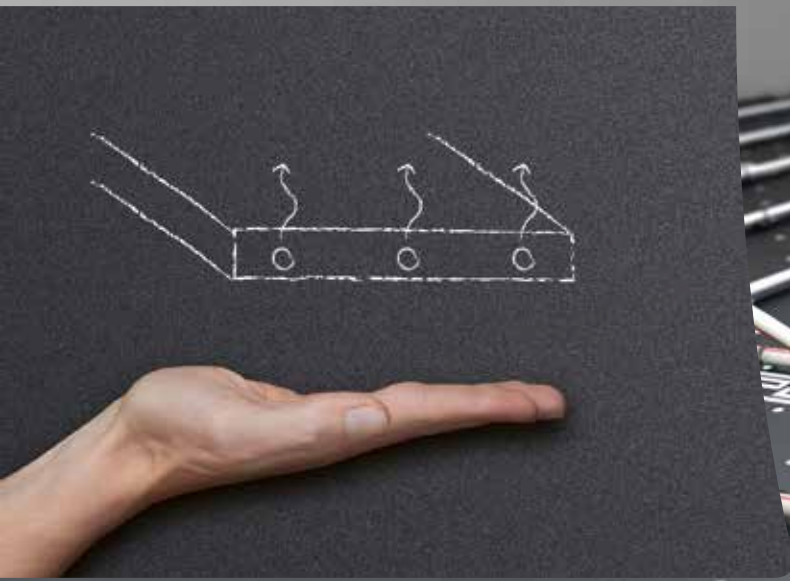


**NEW**

## **Roth Original Tacker® 2.0**

lighter, more convenient,  
more ergonomic



*German quality since 1947*

# Roth Original Tacker® 2.0

tried and tested time and again

- > lighter
- > easier to use
- > more ergonomic
- > better guidance of the E<sup>x</sup> Clips
- > increased capacity
- > height-adjustable
- > with parking position for the Tacker weight

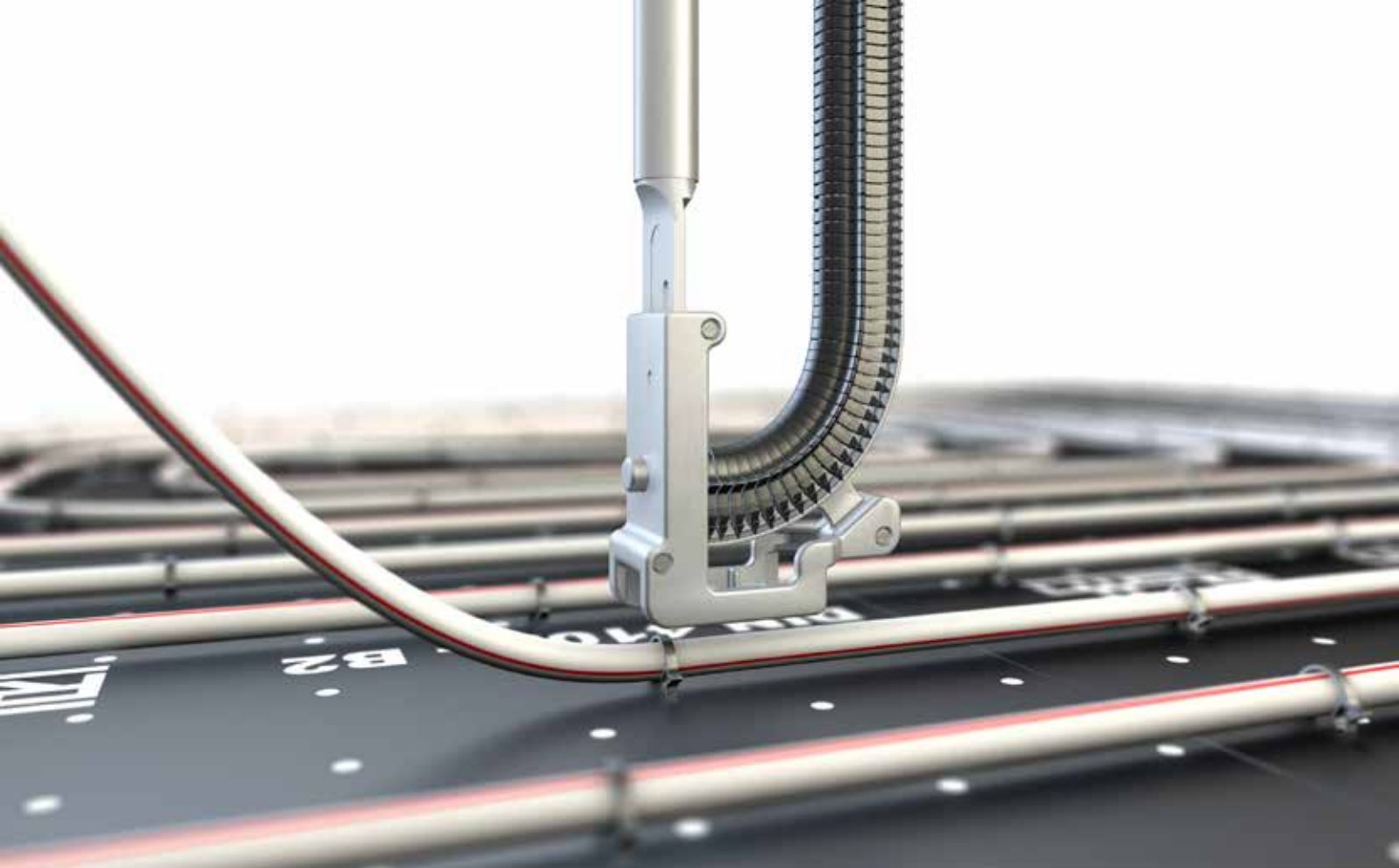
**NEW**

## ■ Roth Original Tacker® 2.0 in a new design

Roth, the inventor of the Original Tacker System that has proven its worth a million times over, has now developed the Tacker further. The new Roth Original Tacker® 2.0 can be used for assembling Roth system pipes with Roth Original Tacker® E<sup>x</sup> Clips on insulating panels during the installation of radiant heating and cooling systems.



- 1 ergonomic handle
- 2 fixed weight to push (parking position)
- 3 quick and easy to fit improved sliding
- 4 increased magazine capacity
- 5 short distance for tacking



that is comfortable to hold

h clips into position  
(n the magazine)

ll,  
roperties

e

he E<sup>x</sup> Clip to travel

■ **Roth Original Tacker® –  
now even lighter**

Despite its new modern design, the Tacker still weighs only two kilograms. It features a slimline housing and has an increased capacity of 135 pipe holders (Roth Original Tacker® E<sup>x</sup> Clips). This significantly reduces the number of times the magazine has to be reloaded during pipe installation.

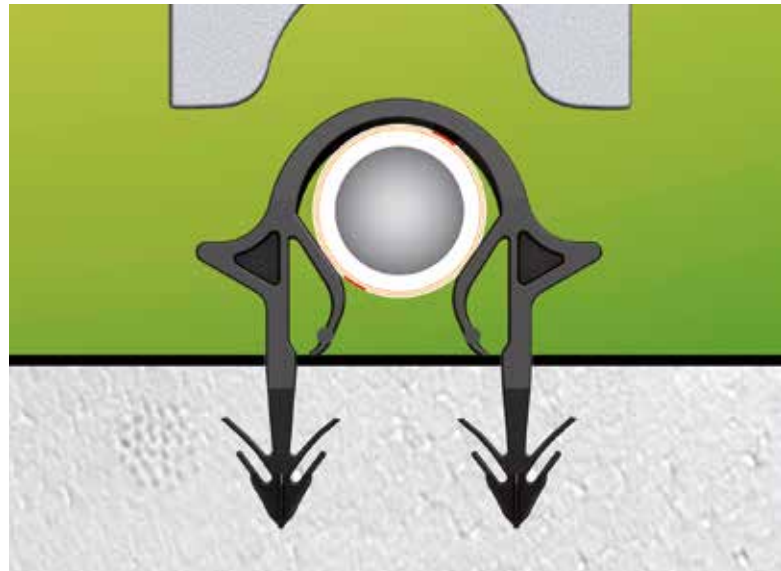
The Roth engineers have also improved the way the clips are guided out of the magazine. In addition, a parking position has been developed on the magazine for the Tacker weight, which prevents loss of Tacker weight during operation under harsh site conditions.

The magazine is filled quickly and simply by pushing the welded clip magazine in from above. The Roth Original Tacker® 2.0 is suitable for Roth Original Tacker® 14 to 20 millimetre E<sup>x</sup> Clips.

The Roth Original Tacker® is height adjustable and can be adjusted for any operator, be they short or tall. The new magazine is compatible with the existing Roth Original Tacker® and can be replaced.

■ **Roth, the Tacker experts**

The inventor of the Roth Original Tacker® System, which has proven its worth a million times over, has made the installation of the innovative Tacker system even more convenient with the Roth Original Tacker® 2.0. Roth has decades of manufacturing expertise in radiant heating and cooling systems.

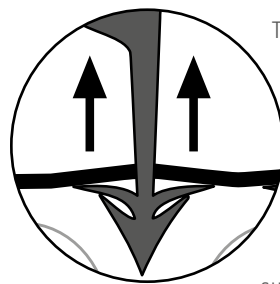


Roth Original Tacker® E<sup>x</sup> Clip with lift-up pipe-raising function for a defined penetration depth and improved energy efficiency

■ **Roth Original Tacker® E<sup>x</sup> Clips for added efficiency, convenience and safety**

The new Roth Original Tacker® E<sup>x</sup> Clip now has a lift-up function for raising pipes. This ensures that the pipe is always completely encased in screed, even when the screed flow is thick. This results in improved transfer and distribution of energy when heating or cooling. In addition, the construction ensures a defined penetration depth in the insulating layer, independent of the dimensions of the pipes being used. When used with the new double barb, this delivers multiple energy benefits in terms of efficiency, comfort and safety.

■ **Double barb enables easier installation, maximum protection against pipes being ripped out and an unsurpassed retention force**



The lower barb in a Roth Original Tacker® E<sup>x</sup> Clip is highly stable and equipped with a sharp cutting edge, while the barb on top of this is exceptionally flexible. This special technology makes it safe and easy to permeate the insulating film in the insulation, thus facilitating and speeding up the installation process.

The stability of the lower barb provides the perfect support for the upper barb.

The double barb offers optimum protection against pipes being ripped out and maximum holding power, as well as ensuring that pipes are positioned securely and precisely in the Roth system composite panels and rolls, even in harsh site conditions.

# Our strengths

Your benefits

## Innovation

- > Early identification of market requirements
- > In-house materials research and development
- > In-house engineering

## Service

- > Extensive field network of qualified sales professionals
- > Hotline and project planning service
- > Factory training courses, planning and product seminars
- > Fast availability of all Roth brand product ranges throughout Europe
- > Comprehensive warranty and extended liability agreements

## Products

- > Complete range of easy-to-install product systems
- > Manufacturing expertise for the complete product range within the Roth Industries group of companies
- > All products and product systems are certified in accordance with DIN EN ISO 9001:2008

The Roth logo is displayed in a bold, white, sans-serif font. The letters are thick and blocky, with a distinctive design where the 'o' and 't' have a unique, slightly irregular shape. The logo is centered horizontally and is flanked by two horizontal white bars, one above and one below, which extend slightly beyond the width of the text.



**ROTH UK Ltd**

1a Berkeley Business Park  
Wainwright Road  
Worcester WR4 9FA  
Phone +44 (0) 1905 453424  
E-Mail enquiries@roth-uk.com  
technical@roth-uk.com  
orders@roth-uk.com  
accounts@roth-uk.com  
roth-uk.com