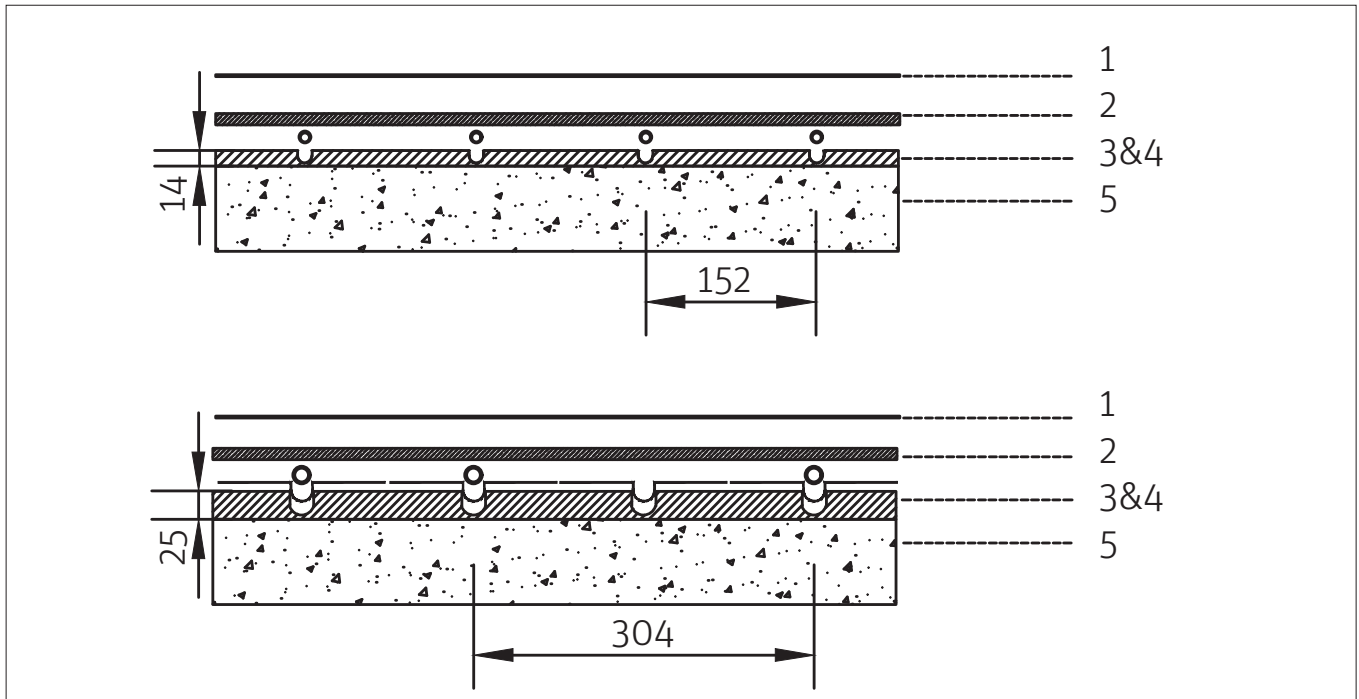


Roth QuickTemp Compact® 24/16 & 14/10,5 System

Floating Floor

Floor finish: Plastic, Vinyl, Carpet, Cork



1. Carpet, cork, vinyl, vinyl cork or other soft surface material
2. Gypsum board 13mm, extra hard (not edge-thinned) or wood board (chipboard, plywood) 12 mm
3. Roth X-PERT SS 16 mm, C/C 152/304 mm - Roth X-PERT SS 10,5 mm, C/C 152 mm
4. Roth QuickTemp Compact® System
5. Load-bearing subfloor ready for installation SR1. (max. unevenness 3 mm/meter)

Roth QuickTemp Compact® 24/16 total height of the system without surface material: 25 mm +/- 1 mm.
 Roth QuickTemp Compact® 14/10,5 total height of the system without surface material: 13.5 - 14 mm.

Preparation and Installation instructions

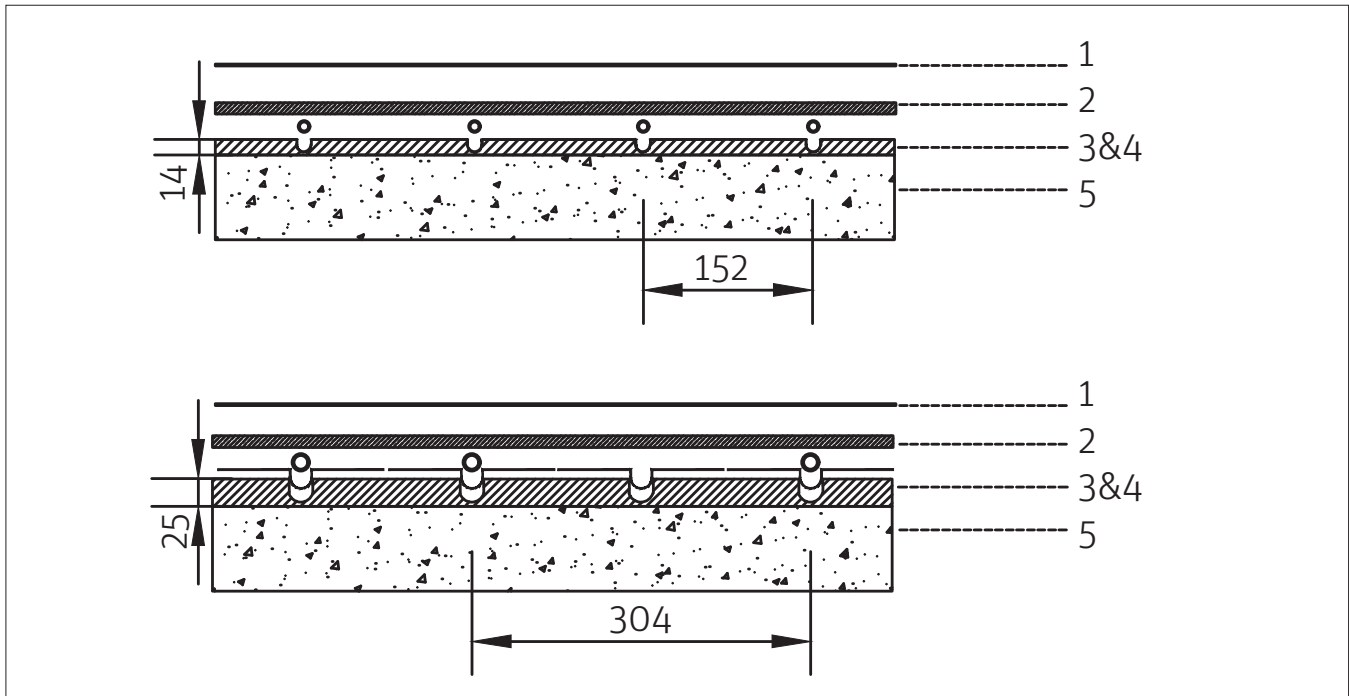
- > The subfloor must be ready for installation (dust-free, load-bearing, solid, even and stable)
 An uneven subfloor can be leveled with a leveling compound before starting the installation.
- > Roth QuickTemp Compact® boards are installed floating.
- > The gypsum or wooden overlay is installed floating.
- > When installing the surface material, you must always follow the material supplier's instructions.
 The compatibility of the system with the surface material must be ensured.

Example structure. The structures are implemented in accordance with the structural plan.

Roth QuickTemp Compact® 24/16 & 14/10,5 System

Floating Floor

Floor Finish: Parquet > 13 mm, Laminate > 13 mm



1. Parquet, laminate > 13 mm floating surface material
2. Underlay, 3 mm
3. Roth X-PERT SS 16 mm, C/C 152/304 mm - Roth X-PERT SS 10,5 mm, C/C 152 mm
4. Roth QuickTemp Compact® System
5. Load-bearing subfloor ready for installation SR1. (max. unevenness 3 mm/meter)

Roth QuickTemp Compact® 24/16 total height of the system without surface material: 25 mm +/- 1 mm.

Roth QuickTemp Compact® 14/10,5 total height of the system without surface material: 13.5 - 14 mm.

Preparation and Installation instructions

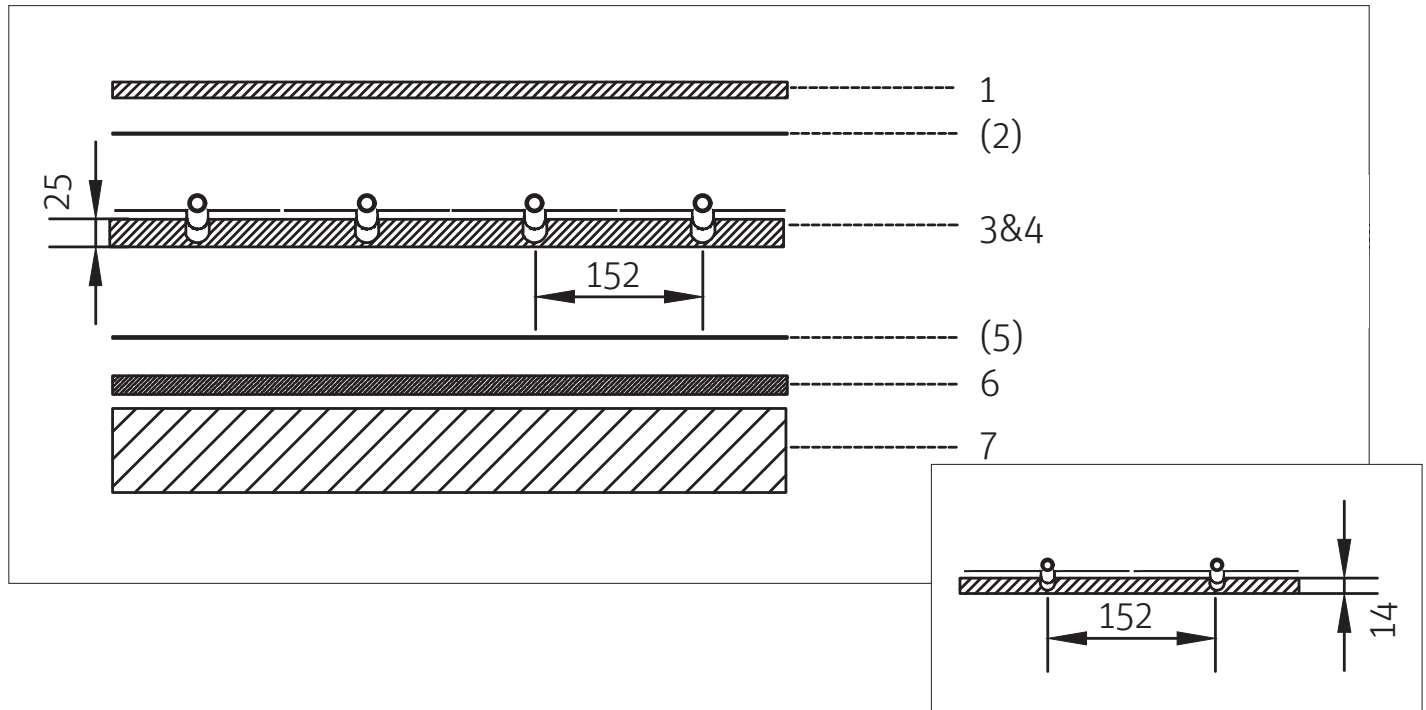
- > The subfloor must be ready for installation (dust-free, load-bearing, solid, even and stable)
An uneven subfloor can be leveled with a leveling compound before starting the installation.
- > Roth QuickTemp Compact® boards are installed floating.
- > When installing the surface material, you must always follow the material supplier's instructions.
The compatibility of the system with the surface material must be ensured.
- > The floor finish material is installed transversely to the direction of the pipes.

Example structure. The structures are implemented in accordance with the structural plan.

Roth QuickTemp Compact® 24/16 & 14/10,5 System

Wooden Joists

Floor finish: Floor Boards



1. Floor board finish screwed through the Roth QuickTemp Compact® board to the sub floor board
2. Floor board / base material according to the manufacturer's instructions
3. Roth X-PERT SS 16 mm, C/C 152/304 mm - Roth X-PERT SS 10,5 mm, C/C 152 mm
4. Roth QuickTemp Compact® System
5. Surface primer where required (dependent on the selected sub floor)
6. 22 mm floor chipboard or other flat, load-bearing base according to the construction plan - SR1 (max. unevenness 3 mm/meter)
7. Floor Joists: Max C/C 600mm

Roth QuickTemp Compact® 24/16 total height of the system without surface material: 25 mm +/- 1 mm.

Roth QuickTemp Compact® 14/10,5 total height of the system without surface material: 13.5 - 14 mm.

Preparation and Installation instructions

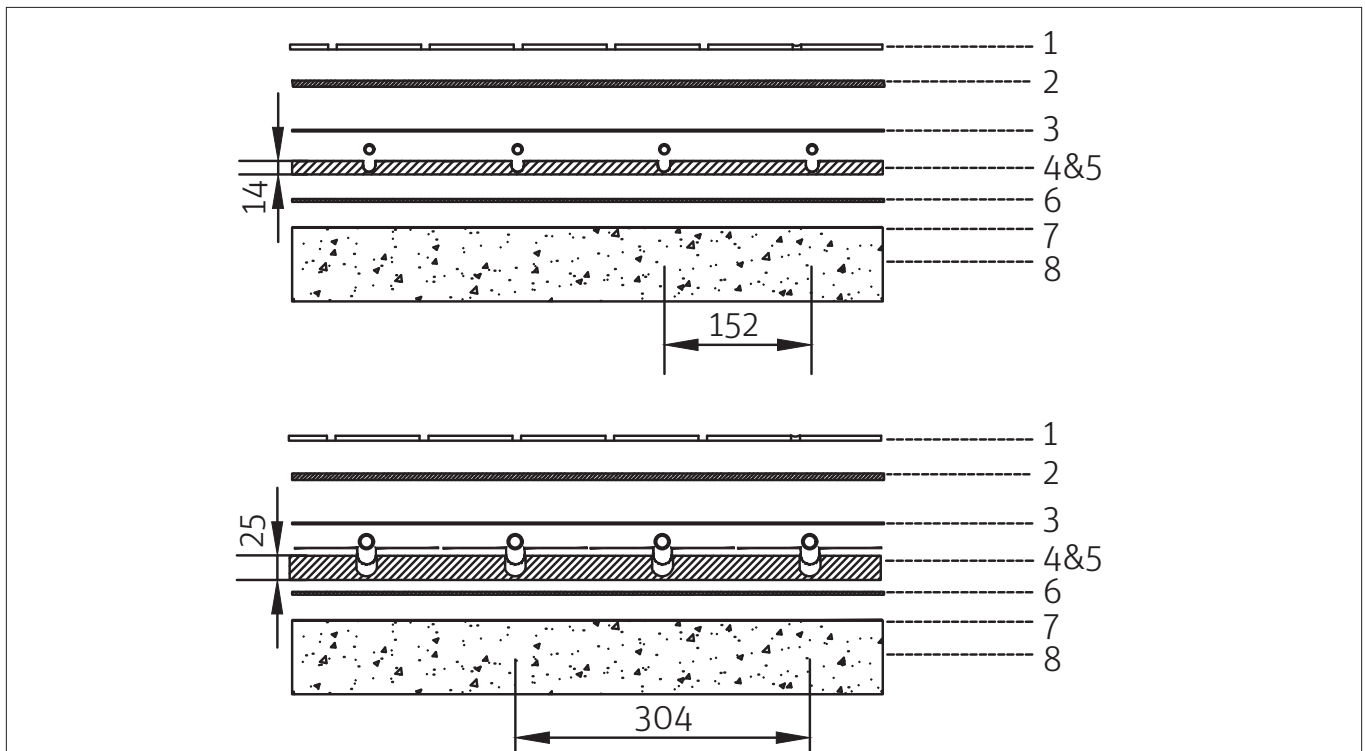
- > If the floor is already finished, it is necessary to check that the base is firm, flat, straight and has sufficient loading capacity.
22 mm thick floor chipboard or construction plywood on top of the joists.
- > If necessary, apply a primer on the sub floor boards according to the manufacturer's instructions.
- > Roth QuickTemp Compact® boards are not attached to the base.
- > The floorboards are attached to the substrate through the Roth QuickTemp Compact® boards according to the wood floor manufacturers installation instructions. The compatibility of the system must be confirmed by the manufacturer.
- > The floor finish floor boards are installed transversely to the direction of the pipes.

Example structure. The structures are implemented in accordance with the structural plan.

Roth QuickTemp Compact® 24/16 & 14/10,5 System

Concrete/Screed structure

Floor Finish: Tile, tile size 300 x 600 mm.



1. Tile (S 300x600mm), flexible joint compound
2. Roth QuickTemp Compact® FLEX FIX
3. Roth QuickTemp Compact® Primer
4. Roth X-PERT SS 16 mm, C/C 152/304 mm - Roth X-PERT SS 10,5 mm, C/C 152 mm
5. Roth QuickTemp Compact® System
6. Surface primer where required (dependent on the selected sub floor)
7. Primer (concrete/screed primer recommended by the concrete/screed manufacturer)
8. Load-bearing subfloor - SR1 (max. unevenness 3 mm/meter)

Roth QuickTemp Compact® 24/16 total height of the system without surface material: 25 mm +/- 1 mm.

Roth QuickTemp Compact® 14/10,5 total height of the system without surface material: 13.5-14 mm.

Preparation and Installation instructions

- > The substrate must be flat, firm, completely oil-free, grease-free, wax-free, etc. The substrate must not have loose plaster, loose cement or cracks.
- > The floor is primed with a Concrete/Screed primer.
- > Roth QuickTemp Compact® boards are glued to the base with Roth QuickTemp Compact® FLEX FIX glue, see separate instructions.
- > The plates are thoroughly cleaned with a vacuum cleaner and the aluminum plates are wiped with sheet metal cleaner (e.g. Teknos Rensa steel) before priming.
- > Roth QuickTemp Compact® boards are primed with Roth QuickTemp Compact® Primer before tiling.
- > Tiles to be glued to Roth QuickTemp Compact® boards are fixed with Roth QuickTemp Compact® FLEX FIX glue.
- > Roth QuickTemp Compact® FLEX FIX glue must not be used as a leveling compound.

See separate installation instructions: Roth QuickTemp Compact® FLEX FIX and Roth QuickTemp Compact® Primer

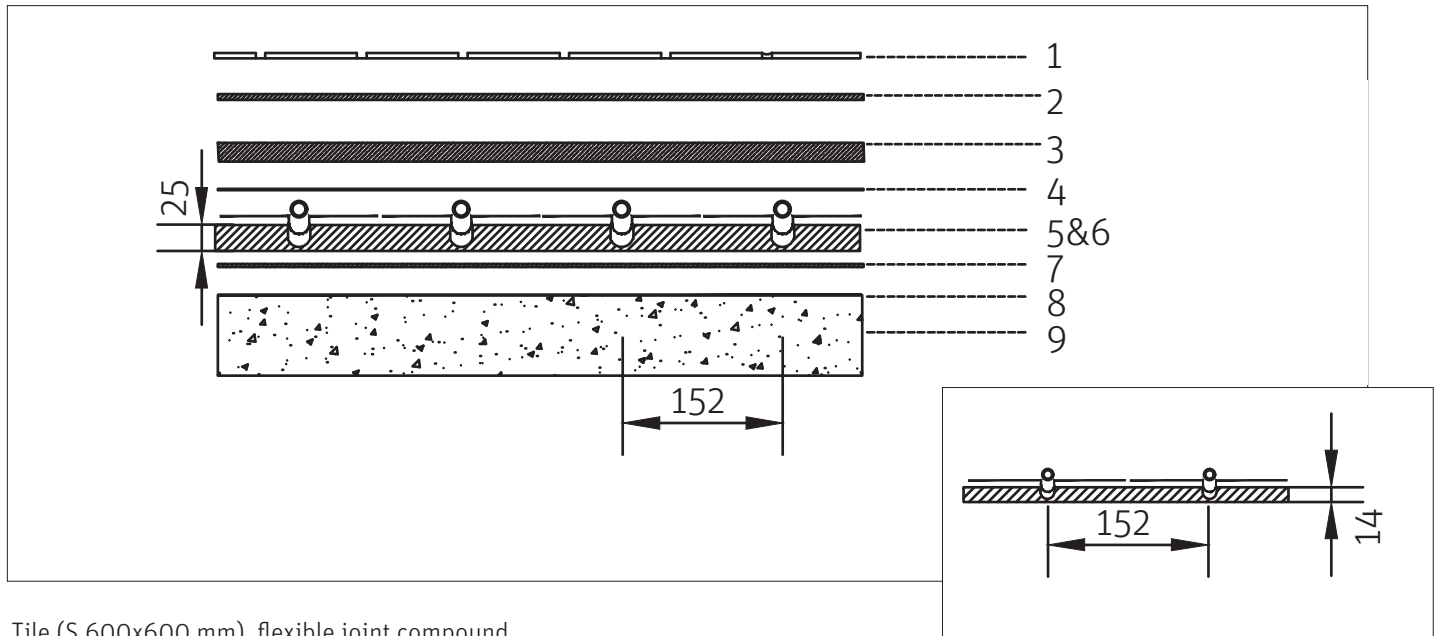
Gluing the system	FIX kg/m ²	Comb size
Roth QuickTemp Compact® board for concrete floor	4 kg	6,5 x 13 mm
< 30x30 tiles	4 kg	6,5 x 13 mm
60x30 tiles	7 kg	10 x 15 mm

Example structure. The structures are implemented in accordance with the structural plan.

Roth QuickTemp Compact® 24/16 & 14/10,5 System

Wet rooms, concrete structure or wooden joisted base (joist C/C 300 mm)

Floor finish: Tile, tile size 600 x 600 mm



1. Tile (S 600x600 mm), flexible joint compound
2. Fixing mortar according to the manufacturer's instructions
3. Primer and moisture barrier according to the manufacturer's instructions
4. Roth Clima Comfort® FLOW layer thickness - min. 25 mm
5. Roth QuickTemp Compact® Primer
6. Roth X-PERT SS 16 mm, C/C 152/304 mm - Roth X-PERT SS 10,5 mm, C/C 152 mm
7. Roth QuickTemp Compact® System
8. Roth QuickTemp Compact® FLEX FIX
9. Primer (depending on the base)
10. (In wooden structures, 22 mm floor chipboard or other load-bearing floor board suitable for wet rooms)
11. Load-bearing and rigid structure suitable for wet rooms, (joisted - max. joist C/C 300 mm)

Roth QuickTemp Compact® 24/16 total height of the system without surface material: 25 mm +/- 1 mm.

Roth QuickTemp Compact® 14/10,5 total height of the system without surface material: 13.5-14 mm.

Preparation and Installation instructions

- > The substrate must be flat, firm, completely oil-free, grease-free, wax-free, etc. The substrate must not have loose plaster, loose cement or cracks (SR1 max. unevenness 3 mm/meter).
- > The substrate is primed according to the manufacturer's instructions.
- > Roth QuickTemp Compact® boards are glued to the base with Roth QuickTemp Compact® FLEX FIX glue.
- > The Roth QuickTemp Compact® plates are thoroughly cleaned with a vacuum cleaner and the aluminum plates are wiped with sheet metal cleaner (e.g. Teknos Rensa steel) before priming.
- > Roth QuickTemp Compact® boards are primed with Roth QuickTemp Compact® Primer before applying Roth QuickTemp Comfort® FLOW leveling compound to the boards.
- > Roth QuickTemp Compact® boards are covered with Roth ClimaComfort® FLOW screed. The minimum thickness is 25 mm.
- > Once primed an approved wet room system is installed according to the manufacturer's instructions in accordance with.
- > The tiles are installed according to the manufacturer's instructions. Tiles can be fixed and jointed with the desired joint compound preparation, as long as it has flexible properties.

See also separate installation instructions: Roth QuickTemp Compact® FLEX FIX and Roth QuickTemp ClimaComfort® FLOW and Roth QuickTemp Compact® Primer.

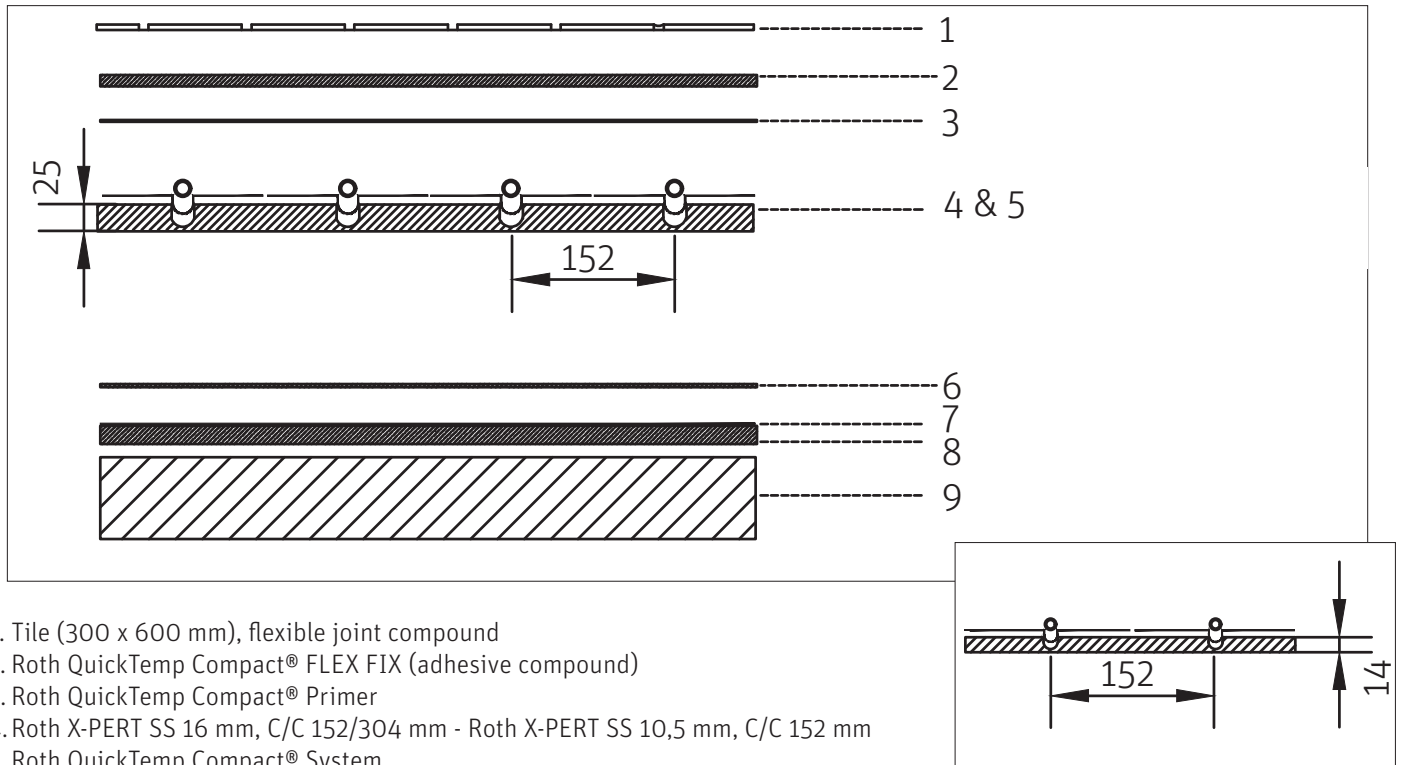
Gluing the system	FIX kg/m ²	Comb size
Roth QuickTempCompact® board for concrete floor	4 kg	6,5 x 13 mm

Example structure. The structures are implemented in accordance with the structural plan.

Roth QuickTemp Compact® 24/16 & 14/10,5 System

Dry premises - wooden beam base

Floor finish: Tile, tile size max. 300 x 600 mm



1. Tile (300 x 600 mm), flexible joint compound
2. Roth QuickTemp Compact® FLEX FIX (adhesive compound)
3. Roth QuickTemp Compact® Primer
4. Roth X-PERT SS 16 mm, C/C 152/304 mm - Roth X-PERT SS 10,5 mm, C/C 152 mm
5. Roth QuickTemp Compact® System
6. Roth QuickTemp Compact® FLEX FIX (adhesive compound)
7. Primer depending on surface material
8. 22 mm floor chipboard or other firm and flat base. Fixing mortar according to the manufacturer's instructions
9. Load-bearing structure, Wooden joists

Roth QuickTemp Compact® 24/16 total height of the system without surface material: 25 mm +/- 1 mm.

Roth QuickTemp Compact® 14/10,5 total height of the system without surface material: 13.5-14 mm.

Preparation and Installation instructions

- > If the floor is already finished, it is necessary to check that the base is firm, flat, straight and has sufficient loading capacity. 22 mm thick floor chipboard or construction plywood on top of the joists.
- > If necessary, apply a primer on the sub floor boards according to the manufacturer's instructions.
- > Roth Compact® boards are not attached to the base.
- > The aluminum sheets must be thoroughly cleaned with a vacuum cleaner and wiped with sheet metal cleaner (e.g. Teknos Rensa steel) before starting gluing.
- > Compact® boards must be primed with Roth Compact® Primer
- > Tiles to be glued to Compact® boards must be fixed with Roth Compact® FLEX FIX glue. The consumption of the adhesive mass according to the table.
- > Tiles can be attached and sealed with the desired joint compound product, as long as it has flexible properties. The size of the tiles may not exceed 60 x 30 cm. Large tile areas must be divided into sub-areas of up to 40 m² using expansion joints. Seams are made according to the manufacturer's instructions, with silicone or other flexible mass used for tiles.

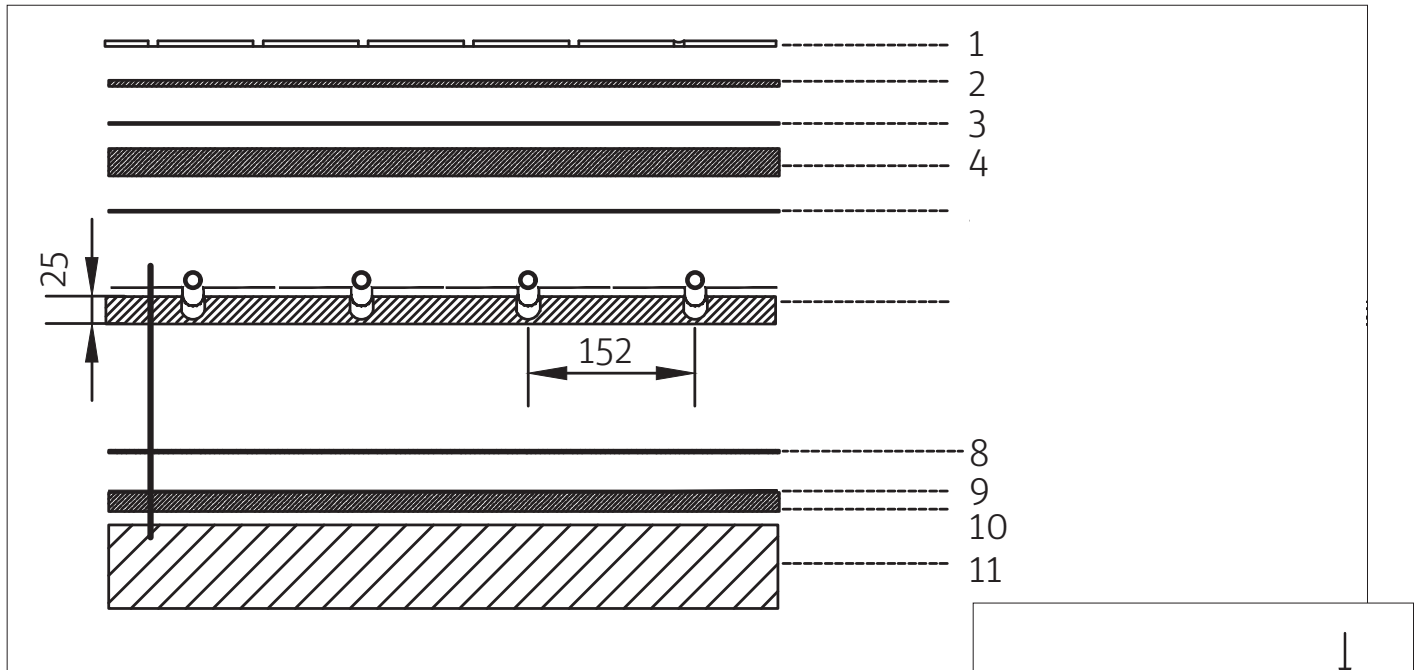
See also separate installation instructions: Roth Compact® FLEX FIX

Gluing the system	FIX kg/m ²	Comb size
Board for concrete floor	4 kg	
< 30x30 tiles	4 kg	C/C 608
60x30, 60x60 tiles	7 kg	C/C 304

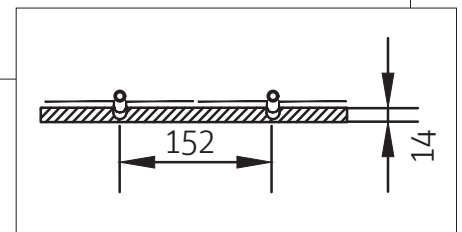
Example structure. The structures are implemented in accordance with the structural plan.

Roth QuickTemp Compact® 24/16 & 14/10,5 System

Roth QuickTemp Compact® board for concrete floor
 Floor Finish: Tile, tile size 600 x 600 mm



1. Tile (600 x 600 mm), flexible joint compound
2. Fixing mortar, e.g. Roth QuickTemp Compact® FLEX FIX
3. Roth QuickTemp ClimaComfort® FLOW layer thickness - min. 10 mm
4. Roth QuickTemp Compact® Primer
5. Roth X-PERT SS 16 mm, C/C 152/304 mm - Roth X-PERT SS 10,5 mm, C/C 152 mm
6. Roth QuickTemp Compact® System
7. Roth QuickTemp Compact® FLEX FIX
8. Primer (concrete/screed primer recommended by the concrete/screed manufacturer)
9. Load-bearing subfloor SR1. (max. unevenness 3 mm/meter)



Roth QuickTemp Compact® 24/16 total height of the system without surface material: 25 mm +/- 1 mm.
 Roth QuickTemp Compact® 14/10,5 total height of the system without surface material: 13.5 - 14 mm.

Preparation and Installation instructions

- > The substrate must be flat, firm, completely oil-free, grease-free, wax-free, etc. The substrate must not have loose plaster, loose cement or cracks.
- > The floor is primed with a concrete/screed primer
- > Roth QuickTemp Compact® boards are glued to the base with Roth QuickTemp Compact® FLEX FIX glue, see separate instructions.
- > The plates are thoroughly cleaned with a vacuum cleaner and the aluminum plates are wiped with a surface cleaner (e.g. Teknos Rensa steel) before priming.
- > Roth QuickTemp Compact® boards are primed with Roth QuickTemp Compact® Primer before FLOW leveling compound spreading.
- > Roth QuickTemp Compact® boards are covered with Roth ClimaComfort® FLOW screed. A layer the minimum thickness is 10 mm.
- > The tiles are installed according to the manufacturer's instructions.

See also separate installation instructions: Roth QuickTemp Compact® FLEX FIX and Roth QuickTemp ClimaComfort® FLOW and Roth QuickTemp Compact® Primer.

Gluing the system	FIX kg/m2	Comb size
Roth QuickTemp Compact® board for concrete floor	4 kg	6,5 x 13 mm

Example structure. The structures are implemented in accordance with the structural plan.